

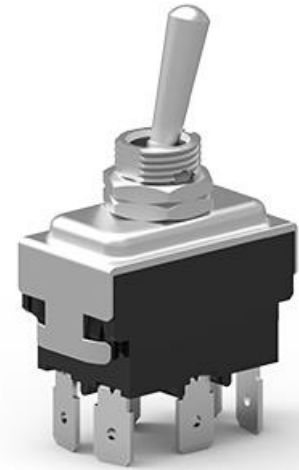
HY29B Toggle Switch

Description

Special switches suitable for all kinds of devices or appliances, it can be

with silicone protection cover.

- Single pole, double poles, three poles and four poles .
- Tab type, screw type or solder type terminal.
- Various shape and toggle length
- Different accessories to be chosen



Standard 标准	UL(UL1054)		UL(UL61058)	TUV, CE(EN61058)		CQC(GB150921)
Rated Voltage 额定电压	125V~	277V~	125V~	250V~	400V~	250V~
Rated Current 额定电流	24A (forHY29K)	15A	18(15)A(for HY29D,E,F,G,H,K) 18(12)A(for HY29B,C,I,J,L)	16(10)A(for HY29B,C,I,J,L) 18(12)A(for HY29D,E,F,G,H,K)	16(18)A (forHY29K)	16(10)A (forHY29J,I,L) 18(12)A (forHY29K,D,E,J,H,F)
	2HP/1.5HP					
Electrical Endurance 电气寿命	6E3		5E4	5E4		5E4

Appearance 外形图	Type 型号	Code 编码	Function 功能	Reference Dimension 参考尺寸	Terminal Options 端子形式
	HY29B	112901	<p>(ON)-OFF-(ON)</p>		T1 Tab 6.3 (插片)
		112902	<p>(ON)-OFF-(ON)</p>		T2 Tab 4.8 (插片)
		112902	<p>(ON)-OFF-(ON)</p>		T3 Screw (螺钉)
		112906	<p>(ON)-OFF-(ON)</p>		T5 Solder Type (焊接式)
	HY29D	112903	<p>ON-OFF-ON</p>		
112904		<p>ON-ON</p>			