

STANDAR RECOVERY DIODE

Features

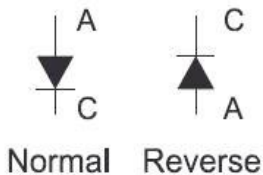
- High surge current capability
- Stud cathode and stud anode version
- Wide current range
- Metric device version available



Typical Applications

- Battery charges
- Converters
- Power supplies
- Machine tool controls
- Welder ■ Motor controls

Polarity



Ordering Information Table

Device Code **FR** **70** **HF** **R** **120** **M**

① ② ③ ④ ⑤ ⑥

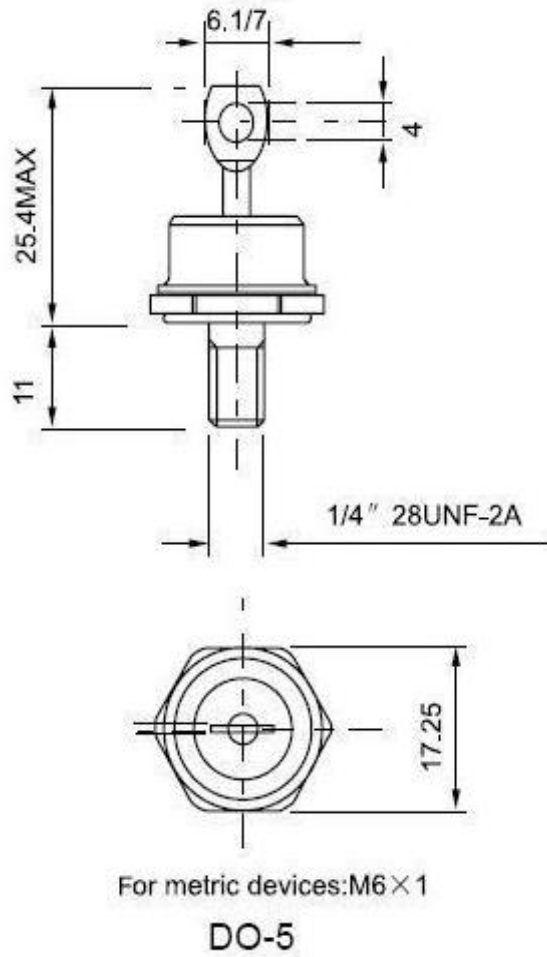
- 1** -None=Standard recovery diodes;
FR=Fast recovery diodes
- 2** -Current code= $I_{F(AV)}$
- 3** -Outline code: F=DO-4 case 6A~25A; HF=DO-5 case 30A~85A
U=DO-8,DO-9 case 100A~300A
- 4** -None=Stud Normal Polarity (cathode to stud)
R=Stud Reverse Polarity (anode to stud)
- 5** -Voltage code=code x 10= V_{RRM}
- 6** -None=Standard inch Device; M=Metric Device

ELECTRICAL CHARACTERISTICS

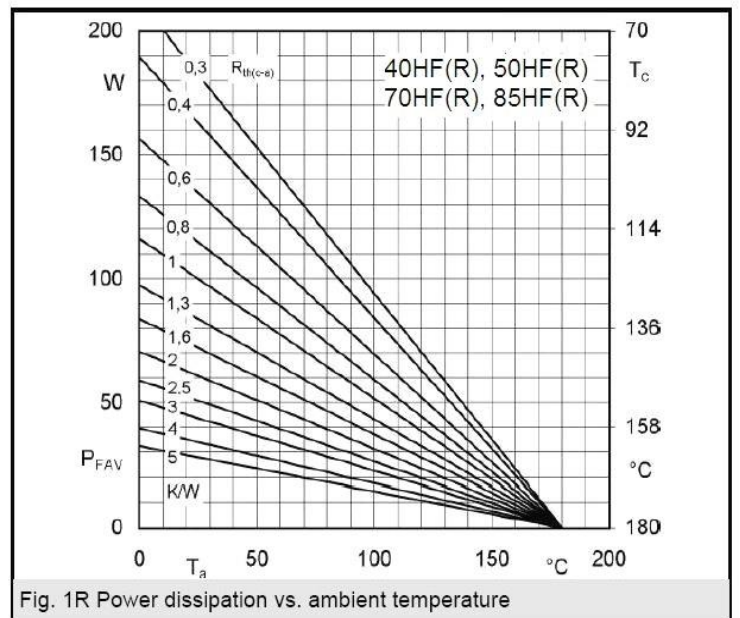
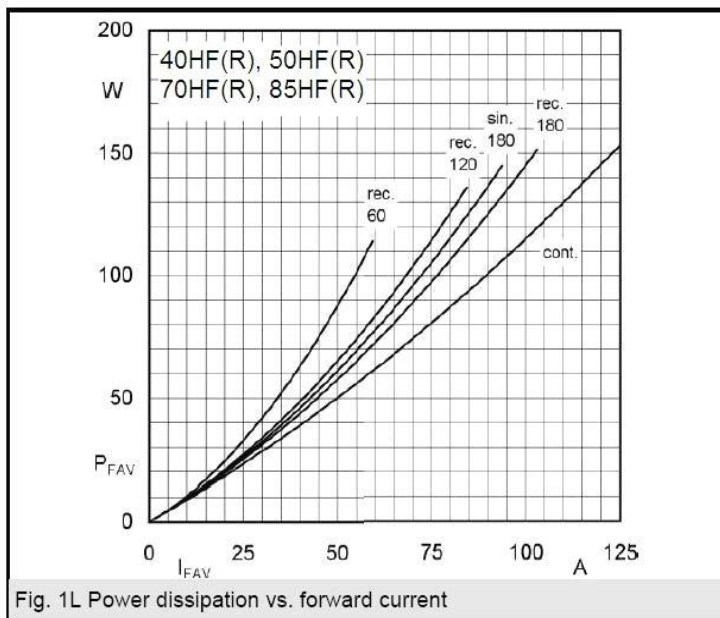
Symbol	Parameter	Conditions	40HF(R)	50HF(R)	70HF(R)	85HF(R)	Unit
$I_{F(AV)}$	Average on-state current	THS=55°C	40	50	70	85	A
$I_{F(RMS)}$	RMS on-state current	THS=55°C	64	80	112	160	A
V_{RRM}	Repetitive peak reverse voltage	THS=140°C	400-1200		400-1600		V
V_{DRM}	Repetitive peak reverse voltage	THS=140°C	400-1200		400-1600		V
I_{RRM}	Repetitive peak reverse voltage	THS=140°C	10	10	12	12	mA
V_{FM}	On-state voltage	THS=140°C	1.3	1.4	1.45	1.45	V
I_{FM}	On-state Current	THS=140°C	120	150	210	240	A
R j-c	Peak gate forward voltage		≤0.8	≤0.8	≤0.6	≤0.5	°C/W
T_j	Junction temperature		-40~+150				°C
T_{stg}	Storage temperature		-40~+125				°C
MT	Mounting torque		≤2.0				N·m
Wt	Weight	Typical value	19	19	20	20	g

STANDAR RECOVERY DIODE

Outline table



Dimension in mm



STANDAR RECOVERY DIODE

