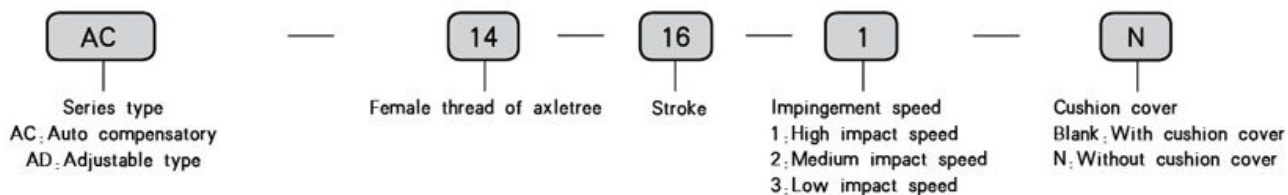


## AC Series Shock absorber



### ● Ordering Code



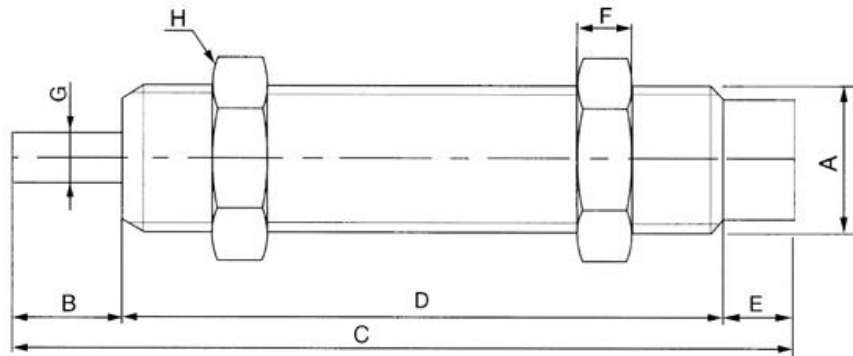
### ■ Specification

Item	Stroke mm	Max. energy absorbed Nm	Max. energy absorbed/hour Nm	Max. effective weight Kg			Max. shock speed m/s			Working Temperature °C
				1	2	3	1	2	3	
AC-0806	6	2	1200	0.5	2	6	2	1	0.5	-10~80
AC-1005	5	3	3600	1	3	7	3	1.5	0.8	-10~80
AC-1008	8	4	5000	2	4	9	3	1.5	0.8	-10~80
AC-1210	10	5	10,000	5	10	30	2	1.5	0.8	-10~80
AC-1412	12	15	30,000	8	50	100	3	1.5	0.8	-10~80
AC-1416	16	20	35,000	10	70	150	3	1.5	0.8	-10~80
AC-2020	20	40	40,000	30	200	700	3.5	2	1	-10~80
AC-2050	50	60	60,000	60	400	1200	3.5	2	1	-10~80
AC-2525	25	80	70,000	200	800	1500	4	2.5	1	-10~80
AC-2540	40	120	75,000	300	1200	2000	4	2.5	1	-10~80
AC-3660	60	250	120,000	400	1500	2400	4	2.5	1	-10~80

■ Specification

Item	Stroke mm	Max. energy absorbed Nm	Max. energy absorbed/hour Nm	Max. effective weight Kg			Max. shock speed m/s			Working Temperature °C
				1	2	3	1	2	3	
AD-1410	10	20	25,000	80			3			-10~80
AD-2016	16	25	30,000	200			3.5			-10~80
AD-2525	25	85	70,000	400			3.5			-10~80
AD-2540	40	100	80,000	700			3.5			-10~80
AD-3650	50	300	100,000	1400			3			-10~80
AD-4225	25	260	125,000	3000			3.5			-10~80
AD-4250	50	500	150,000	4000			4.5			-10~80
AD-4275	75	750	180,000	6000			4.5			-10~80
AD-6450	50	12,000	1500,000	12727			1.5			-10~80
AD-64100	100	24,000	2000,000	18181			1.5			-10~80
AD-64150	150	36,000	2500,000	23636			1.5			-10~80

● Without cushion cover

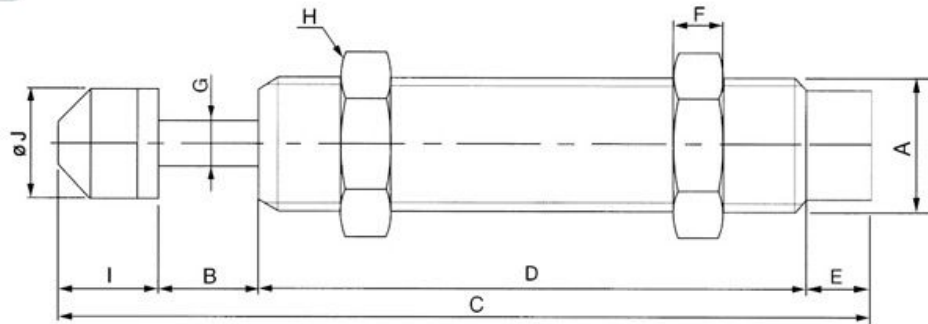


■ Figure Dimension

Specification/Type	A	B	C	D	E	F	G	H
AC-0806	M8x1.0	6	44	33	5	3	2.8	11
AC-1005	M10x1.0	5	32.7	22.9	4.8	3	3	12.7
AC-1008	M10x1.0	8	51	38	5	3	3	12.7
AC-1210	M12x1.0	10	60	45.5	4.5	4	3	14
AC-1412	M14x1.5	12	88	67	9	6	4	19
AC-1416	M14x1.5	16	111	86	9	6	4	19

## AC Series Shock absorber

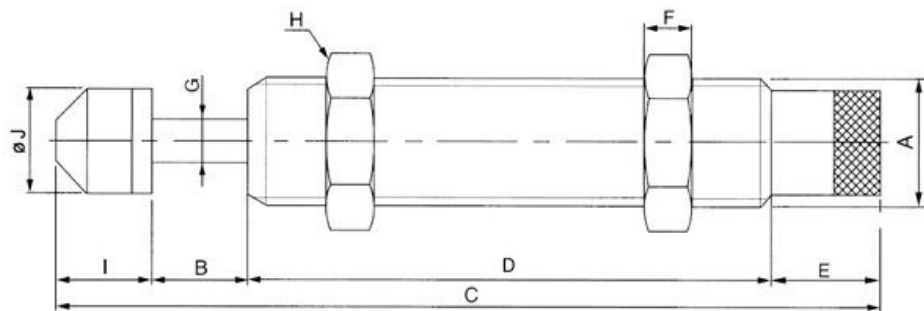
### ● With cushion cover



■ Figure Dimension

Specification/Type	A	B	C	D	E	F	G	H	J
AC-0806	M8x1.0	6	52.4	33	5	3	2.8	11	6.6
AC-1005	M10x1.0	5	41.2	22.9	4.8	3	3	12.7	8.6
AC-1008	M10x1.0	8	59.5	38	5	3	3	12.7	8.6
AC-1210	M12x1.0	10	69.5	45.5	4.5	4	3	14	10.3
AC-1412	M14x1.5	12	102.5	67	9	6	4	19	12
AC-1416	M14x1.5	16	125.5	86	9	6	4	19	12
AC-2020	M20x1.5	20	146.5	101	9	8	6	26	18
AC-2050	M20x1.5	50	233.5	158	9	8	6	26	18
AC-2525	M25x1.5	25	154.3	101	10	10	8	32	22
AC-2540	M25x1.5	40	208.3	127	10	10	8	32	22
AC-3660	M36x1.5	60	243	134	11	15	10	46	35

### ● Adjustable Type

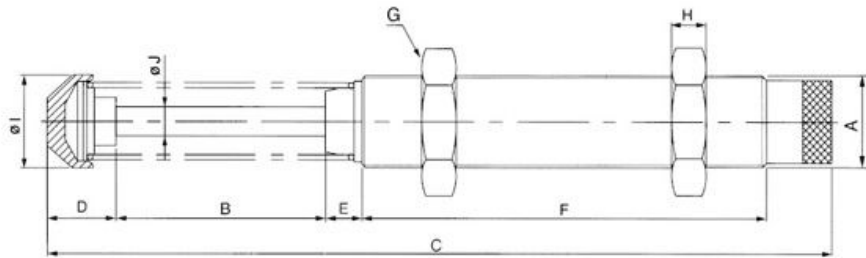


■ Figure Dimension

Specification/Type	A	B	C	D	E	F	G	H	I	J
AD-1410	M14x1.5	10	113.5	73	16	6	4	19	14.5	12
AD-2016	M20x1.5	16	149.5	101	16	8	6	26	16.5	18
AD-2525	M25x1.5	25	161.8	101	17.5	10	8	32	18.3	22
AD-2540	M25x1.5	40	215.8	127	17.5	10	8	32	31.3	22

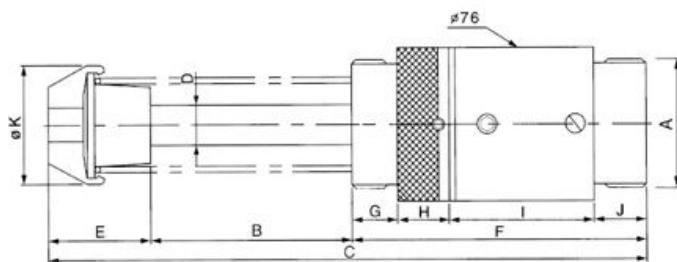
AC Series Shock absorber

● Adjustable Type



■ Figure Dimension

Specification/Type	A	B	C	D	E	F	G	H	I	J
AD-3650	M36x1.5	50	242	21	17	146	46	15	35	10
AD-4225	M42x1.5	25	186.5	34	26	104.5	50	15	44.5	12
AD-4250	M42x1.5	50	241	34	26	134	50	15	44.5	12
AD-4275	M42x1.5	75	301.5	39	26	164.5	50	15	44.5	12



■ Figure Dimension

Specification/Type	A	B	C	D	E	F	G	H	I	J	K
AD-6450	2 1/2 -UNF(63.5)	50	247.8	20	51.8	146	23	20	77	26	59
AD-64100	2 1/2 -UNF(63.5)	100	347.8	20	51.8	196	23	20	127	26	59
AD-64150	2 1/2 -UNF(63.5)	150	467.8	20	61.8	256	23	20	187	26	59