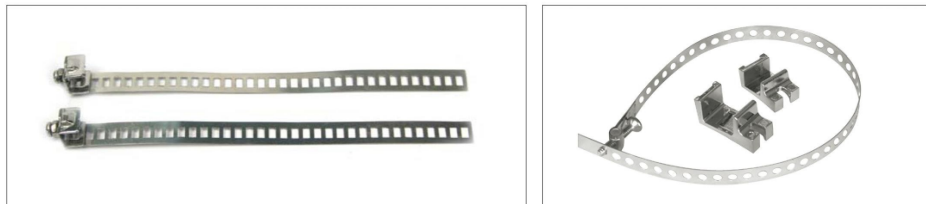
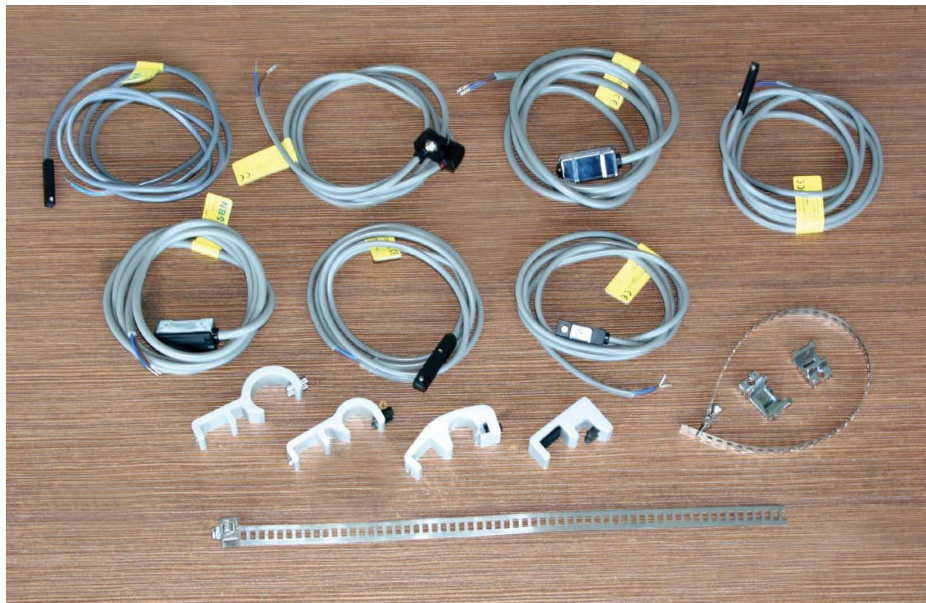


● Ordering Code **CS1—S** — **N** — **1M** — **QD**

Type N: Contactless NPN 1M: 线长 1米 配 QD 接头
 P: Contactless PNP transistor 根据客户需要而定 无: 不配 QD 接头



固定钢带 BK PAB PBM



SC series

IH series

PI series

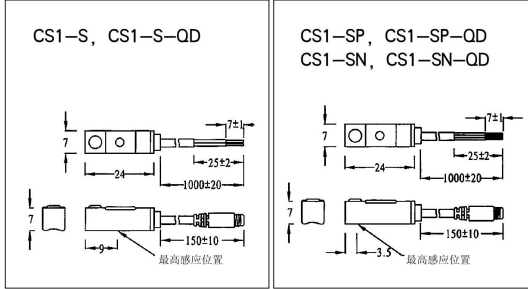
PM series

Specification	Type	Size	Voltage	User
Contact/Magneticreed	CS1—U Series		5~240VDC/AC	Used for: TGU TGC TGI
Contactless/NPN output				
Contactless/PNP output	CS1—F Series		5~30VDC	
Contact/Magneticreed	CS1—J Series		5~240VDC/AC	Used for: TGN
Contactless/NPN output			5~30VDC	
Contactless/PNP output				
Contact/Magneticreed	CS1—S Series		5~240VDC/AC	Used for: TGL TGA TGM
Contactless/NPN output			5~30VDC	
Contactless/PNP output				
Contact/Magneticreed	CS1—M Series		5~240VDC/AC	Used for: TGD
Contactless/NPN output			5~30VDC	
Contactless/PNP output				
Contact/Magneticreed	CS1—H Series		5~240VDC/AC	Used for: CXS
Contactless/NPN output				
Contactless/PNP output	CS1—G Series		5~30VDC	Used for: TGN
Contact/Magneticreed	CS1—72 Series		5~240VDC/AC	Used for: CO2
Contactless/NPN output			5~30VDC	
Contactless/PNP output				

CS1-S Series

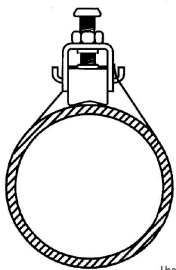


* CS1-S series used for: TGA, TGL, TGM



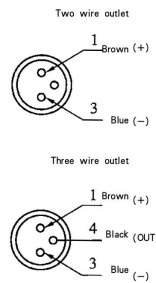
Specification	CS1-S	CS1-SN	CS1-SP
Wire pattern	2-wire type	3-wire type	
Switching logic	SPST Normally open	Solidstate output Normally open	
Output	Magnetic reed contact	Contactless NPN	Contactless PNP transistor
Operating voltage	5 ~ 240V DC/AC	5 ~ 30V DC/AC	
Switch current	100mA max.	200mA max.	
Contact rating	10W max.	6W max.	
Current consumption	None	22mA @ 24V max.	20mA @ 24V max.
Voltage drop	3.5V max.	0.5V max.	
Current leakage	None	0.01mA max.	
LED indicator	Green LED	Red LED	Green LED
Wire	3, 3φ, 2C, Gray PVC	3, 3φ, 3C, Black Oil-resistant PU	
Operating Frequency	200Hz	1000Hz	
Tem range		-10 ~ 60°C (No Freeze)	
Shock	30G	50G	
Vibration		9G	
Enclosure classification		IEC529 IP67 (NEMA6)	
Protection circuit	None	Power source reverse polarity; Surge suppression	
Current Drawing			

*CS1-S Series BK mounting band



Used for 6-83 Round cylinder

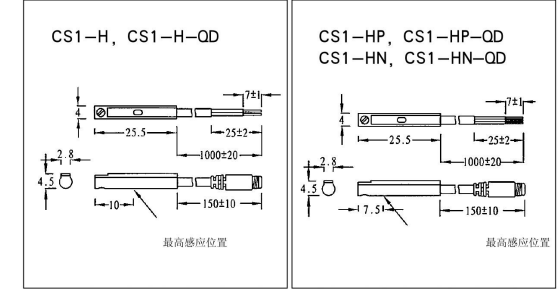
QD Pinout drawing



CS1-H Series

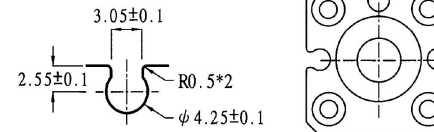


* CS1-H series used for CXS

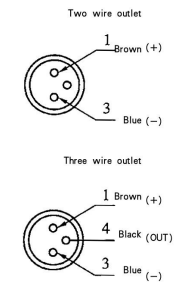


Specification	CS1-H	CS1-HN	CS1-HP
Wire pattern	2-wire type	3-wire type	
Switching logic	SPST Normally open	Solidstate output Normally open	
Output	Magnetic reed contact	Contactless NPN	Contactless PNP transistor
Operating voltage	5 ~ 120V DC/AC	5 ~ 30V DC	
Switch current	100mA max.	200mA max.	
Contact rating	10W max.	6W max.	
Current consumption	None	20mA @ 24V max. (Switch Active)	
Voltage drop	2.5V max.	0.5V @ 20mA max.	
Current leakage	None	0.01mA max.	
LED indicator	Red LED	Red LED	Green LED
Wire	2, 8φ, 2C, Gray PVC	2, 8φ, 3C, Black Oil-resistant PU	
Operating Frequency	200Hz	1000Hz	
Tem range		-10 ~ 60°C (No Freeze)	
Shock	30G	50G	
Vibration		9G	
Enclosure classification		IEC529 IP67 (NEMA6)	
Protection circuit	None	Power source reverse polarity; Surge suppression	
Current Drawing			

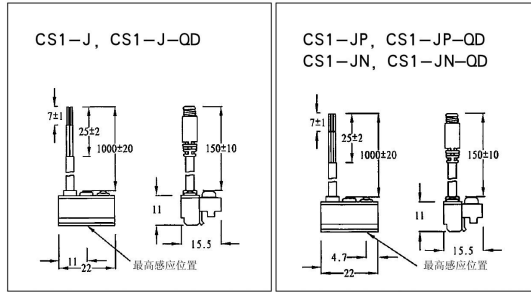
*CS1-H Series groove size, installation means Used for SMC



QD Pinout drawing

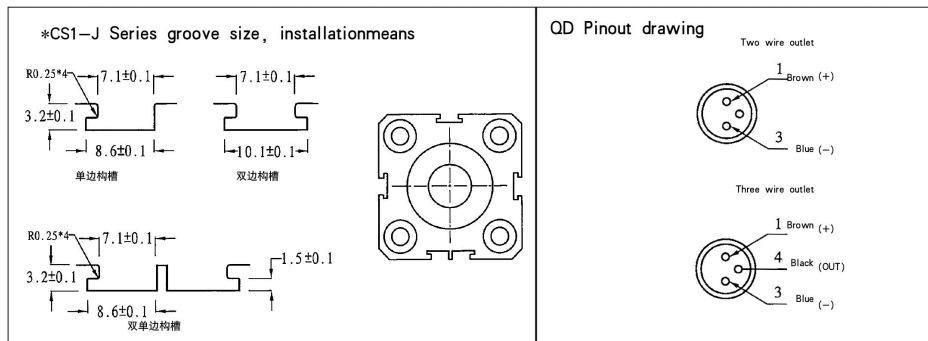


CS1-J Series



* CS1-J series used for TGN

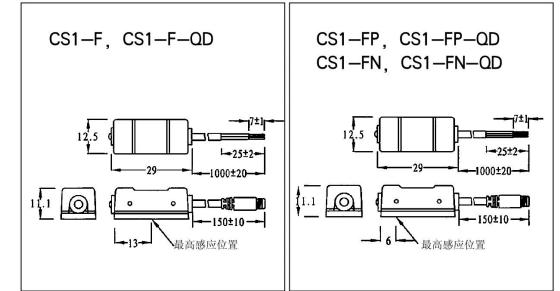
Specification	CS1-J	CS1-JN	CS1-JP
Wire pattern	2-wire type	3-wire type	
Switching logic	SPST Normally open	Solidstate output Normally open	
Output	Magnetic reed contact	Contactless NPN	Contactless PNP transistor
Operating voltage	5~240V DC/AC	5~30V DC	
Switch current	100mA max.	200mA max.	
Contact rating	10W max.	6W max.	
Current consumption	None	22mA @ 24V max.	20mA @ 24V max.
Voltage drop	3.5V max.	0.5V max.	
Current leakage	None	0.01mA max.	
LED indicator	Green LED	Red LED	Green LED
Wire	3, 3φ, 2C, Gray PVC	3, 3φ, 3C, Black Oil-resistant PU	
Operating Frequency	200Hz	1000Hz	
Tem range		-10~60°C (No Freeze)	
Shock	30G	50G	
Vibration		9G	
Enclosure class itication		IEC529 IP67 (NEMA6)	
Protection circuit	None	Power source reverse polarity; Surge suppression	
Current Drawing			



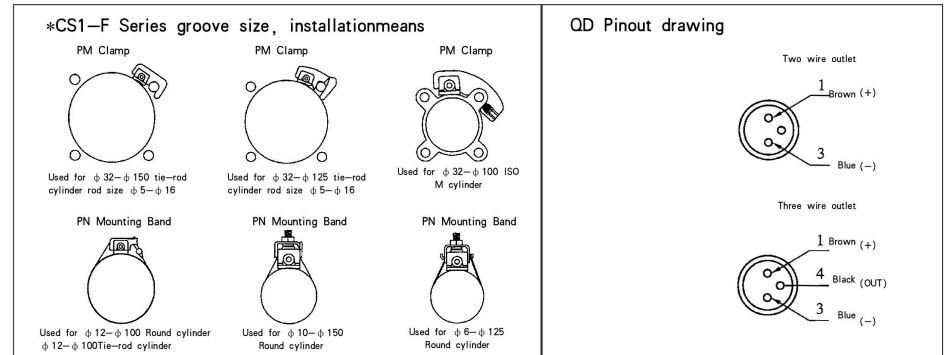
CS1-F Series



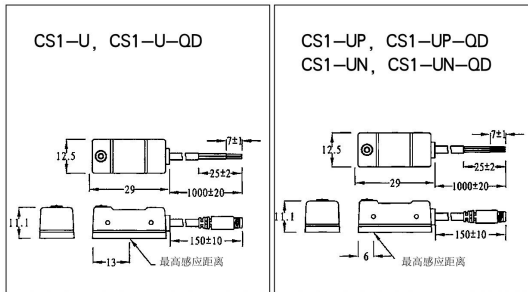
* CS1-F Series used for TGU, TGC, TGI



Specification	CS1-F	CS1-FN	CS1-FP
Wire pattern	2-wire type	3-wire type	
Switching logic	SPST Normally open	Solidstate output Normally open	
Output	Magnetic reed contact	Contactless NPN	Contactless PNP transistor
Operating voltage	5~240V DC/AC	5~30V DC	
Switch current	100mA max.	200mA max.	
Contact rating	10W max.	6W max.	
Current consumption	None	20mA @ 24V max.	20mA @ 24V max.
Voltage drop	3.5V max.	0.5V max.	
Current leakage	None	0.01mA max.	
LED indicator	Green LED	Red LED	Green LED
Wire	4φ, 2C, Gray PVC	4.0φ, 3C, Black Oil-resistant PU	
Operating Frequency	200Hz	1000Hz	
Tem range		-10~60°C (No Freeze)	
Shock	30G	50G	
Vibration		9G	
Enclosure class itication		IEC529 IP67 (NEMA6)	
Protection circuit	None	Power source reverse polarity; Surge suppression	
Current Drawing			



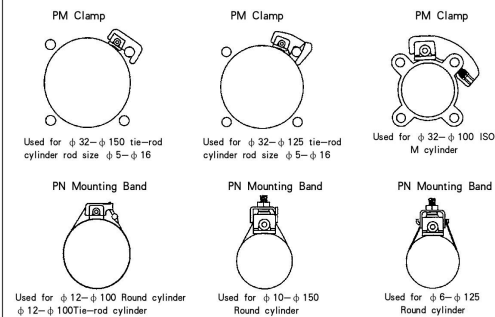
CS1-U Series



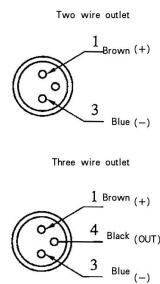
* CS1-U Series used for: TGU, TGC, TGI

Specification	CS1-U	CS1-UN	CS1-UP
Wire pattern	2-wire type	3-wire type	
Switching logic	SPST Normally open	Solidstate output Normally open	
Output	Magnetic reed contact	Contactless NPN	Contactless PNP transistor
Operating voltage	5-120V DC/AC	10-30V DC/AC	
Switch current	100mA max.	100mA max.	
Contact rating	10W max.	3W max.	3W max.
Current consumption	None	17mA @ 24V max.	14mA @ 24V max.
Voltage drop	3.0V max.	2.0V max.	
Current leakage	None	0.01mA max.	
LED indicator	Green LED	Red LED	Green LED
Wire	2.8φ, 2C, Gray PVC	3.0φ, 3C, Black Oil-resistant PU	3.0φ, 3C, Black Oil-resistant PU
Operating Frequency	200Hz	1000Hz	
Tem range	-10~60°C (No Freeze)		
Shock	30G	50G	
Vibration	9G		
Enclosure classification	IEC529 IP67 (NEMA6)		
Protection circuit	None	Power source reverse polarity, Surge suppression	
Current Drawing			

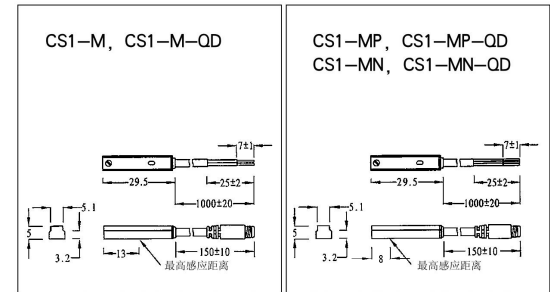
* CS1-U Series groove size, installation means



QD Pinout drawing



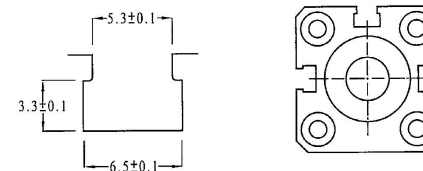
CS1-M Series



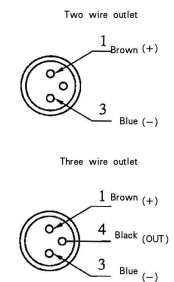
* CS1-M Series used for: TGD

Specification	CS1-M	CS1-MN	CS1-MP
Wire pattern	2-wire type	3-wire type	
Switching logic	SPST Normally open	Solidstate output Normally open	
Output	Magnetic reed contact	Contactless NPN	Contactless PNP transistor
Operating voltage	5-120V DC/AC	10-30V DC	
Switch current	100mA max.	100mA max.	
Contact rating	10W max.	3W max.	3W max.
Current consumption	None	17mA @ 24V max.	14mA @ 24V max.
Voltage drop	3.0V max.	2.0V max.	
Current leakage	None	0.01mA max.	
LED indicator	Red LED	Red LED	Yellow LED
Wire	2.8φ, 2C, Gray PVC	3.0φ, 3C, Black Oil-resistant PU	3.0φ, 3C, Black Oil-resistant PU
Operating Frequency	200Hz	1000Hz	
Tem range	-10~60°C (No Freeze)		
Shock	30G	50G	
Vibration	9G		
Enclosure classification	IEC529 IP67 (NEMA6)		
Protection circuit	None	Power source reverse polarity, Surge suppression	
Current Drawing			

*CS1-M Series groove size, installation means
Used for: SMC, FESTO

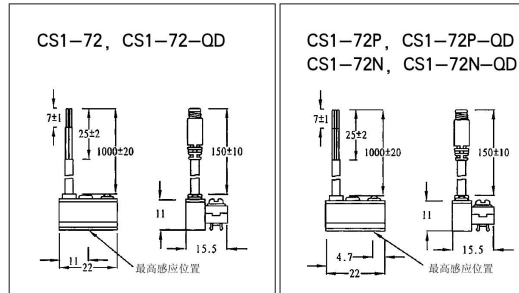


QD Pinout drawing



Magnetic switch

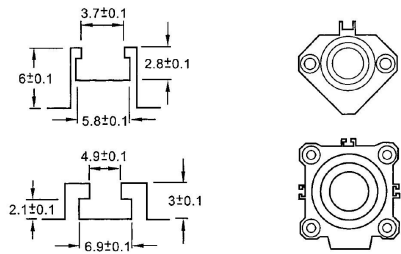
CS1-72 Series



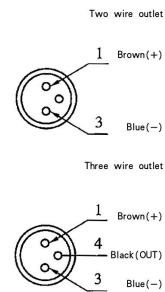
* CS1-72 series used for: CQ2

Specification	CS1-72	CS1-72N	CS1-72P
配Wire pattern	2-wire type	3-wire type	
Switching logic	SPST Normally open	Solidstate output Normally open	
Output	Magnetic reed contact	Contactless NPN	Contactless PNP transistor
Operating voltage	5-240V DC/AC	5-30V DC	
Switch current	100mA max.	200mA max.	
Contact rating	10W max.	6W max.	
Current consumption	None	22mA @ 24V max.	20mA @ 24V max.
Voltage drop	3.5V max.	0.5V max.	
Current leakage	None	0.01mA max.	
LED indicator	Green LED	Red LED	Green LED
Wire	3.3mm ϕ 2C Gray PVC	3.3mm ϕ 3C Black Oil-resistant PU	
Operating Frequency	200Hz	1000Hz	
Tem range		-10~60°C (No Freeze)	
Shock	30G	50G	
Vibration		9G	
Enclosure classification		IEC529 IP67 (NEMA6)	
Protection circuit	None	Power source reverse polarity, Surge suppression	
Current Drawing			

*CS1-72 Series groove dimensional drawing Used to SMC

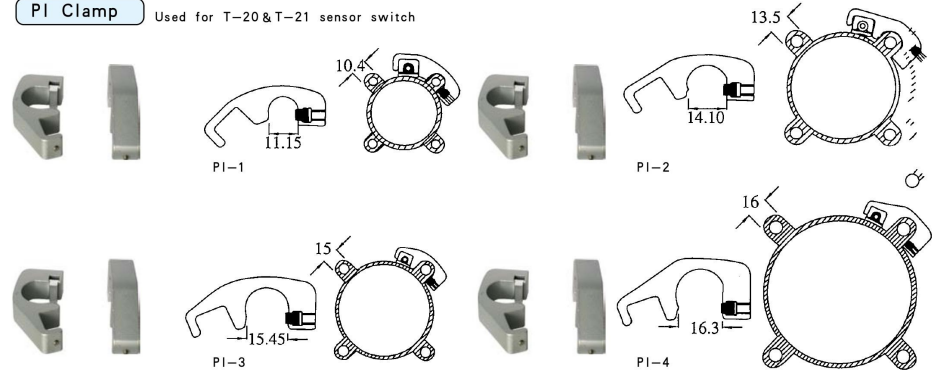


QD Pinout drawing



Clamp

PI Clamp Used for T-20&T-21 sensor switch

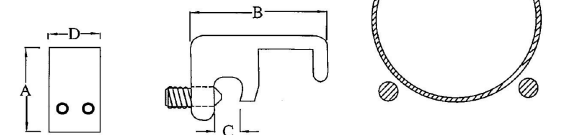


Suitable for: ϕ 32- ϕ 100 ISO profile cylinder

PI Clamp Used for T-20&T-21 sensor switch

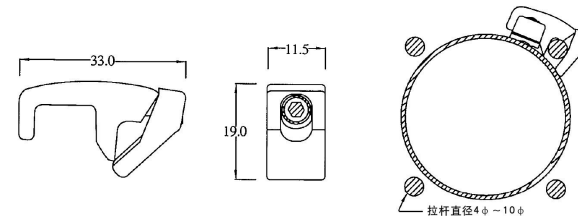


Size	Type	A	B	C	D
PM-6		19	31.0	6.5	12
PM-6		20	34.5	8.0	12
PM-6		18	33.0	10	12
PM-6		20	35.5	12	12
PM-6		24	40.0	16	12



Suitable for: ϕ 32- ϕ 100 air, hydraulic cylinder (With tie-rod)

PI Clamp Used for T-20&T-21 sensor switch



Suitable for: ϕ 32- ϕ 100 pole cylinder, air or hydraulic