

TG Series Solenoid Valve



● Character

It is a pneumatic valve controlled by micro electric signal, with small dimension, large flow, handsome shape, reliable performance and long service life. It can be installed in integration. It is an ideal directional control element, applicable to the electromechanical integration. There are multiple specifications for your choice.

● Ordering Code

TG	25	1	1		06	C	AC220V
Series	Function	Connection Code	Control Form		Pipe Size	Working Mode	Standard Voltage
	23 : 2 Positions/3Ports 25 : 2 Positions/5Ports 35 : 3 Positions/5Ports	1 : 1/8 2 : 1/4 3 : 3/8 4 : 1/2	1 : Single Solenoid Operated 2 : Double Solenoid Operated 1F : Die Cast Single Solenoid Operated 2F : Die Cast Single Solenoids Operated		06 : G1/8 08 : G1/4 10 : G3/8 15 : G1/2	No Mark : 2 Positions C : 3 Positions Closed Center E : 3 Positions Release Center P : 3 Positions Pressed Center	DC24V AC110V AC220V

■ Solenoid specifications

Allowable Voltage Range		±10%
Insulated Grade		Class B or Equivalent
Response Time		0.05 Sec
Power Consumption	AC	Start : 5.6VA, Keep on : 5.4VA
	DC	4W
Surge Voltage Suppressor		AC: Varistor, DC: Diode
Indicator Light		Neon Light, LED

● Maintenance Notice:

1. Be sure to check up the valve before installation.
2. Before installation, please confirm the voltage connection and direction of the air flow are right.
3. Notice to be dustproof. It's best to install a silencer or speed control silencer in front of solenoid valve.
4. Metal grain, dust and oil stain in pipes and fittings must be washed neatly before connected.

■ Technical Parameter

Specification	Item	Function	Pipe Size	Nominal Diameter (mm)	Applicable Medium	Applicable Pressure Range	Operating Method	Max Action Frequency	Lubrication	Medium Temperature
TG2311-06	2 Positions/3Ports		G1/8	6	Air	0.15 ~ 0.8 MPa	Internally Piloted	5 Cycles/Sec	Needless	-5 ~ 60°C
TG2321-08			G1/4	8						
TG2331-10			G3/8	10						
TG2341-15			G1/2	15						
TG2511-06 TG2512-06	2 Positions/5Ports		G1/8	6						
TG2521-08 TG2522-08			G1/4	8						
TG2531-10 TG2532-10			G3/8	10						
TG2541-15 TG2542-15			G1/2	15						
TG2511F-06 TG2512F-06			G1/8	6						
TG2521F-08 TG2522F-08			G1/4	8						
TG2531F-10 TG2532F-10	G3/8	10								
TG3512-06C.E.P	3 Positions/5Ports		G1/8	6						
TG3522-08C.E.P			G1/4	8						
TG3532-10C.E.P			G3/8	10						
TG3542-15C.E.P			G1/2	15						

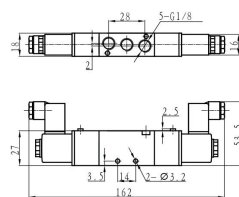
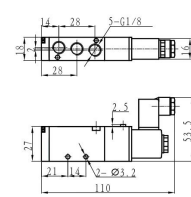
TG Series Solenoid Valve

2 Positions/5 Ports Solenoid Valve

Figure Dimension

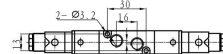
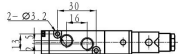
● TG2511-06

● TG2512-06



● TG2511-06

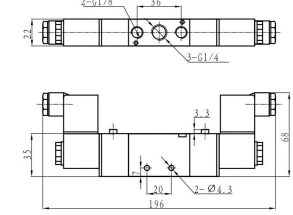
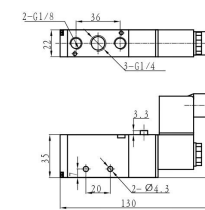
● TG2512-06



2 Positions/5 Ports Solenoid Valve

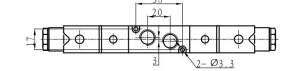
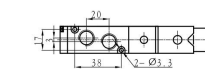
● TG2521-08

● TG2522-08



● TG2521-08
TG2521-06

● TG2522-08
TG2522-06

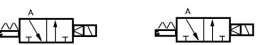
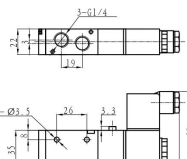
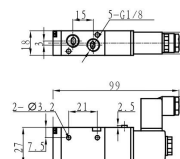


2 Positions/3 Ports Solenoid Valve

Figure Dimension

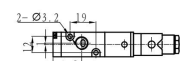
● TG2311-06

● TG2321-08



● TG2311-06

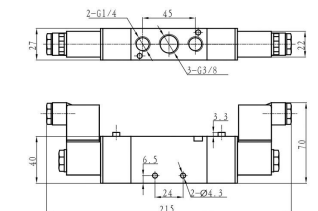
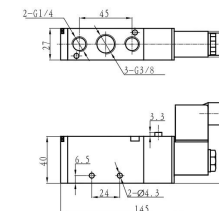
● TG2321-08



2 Positions/5 Ports Solenoid Valve

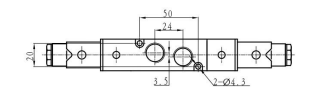
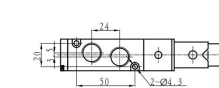
● TG2531-10

● TG2532-10



● TG2531-10
TG2531-08

● TG2532-10
TG2532-08

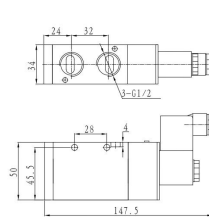
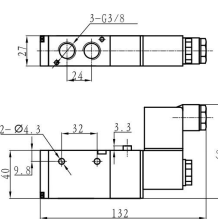


2 Positions/3 Ports Solenoid Valve

Figure Dimension

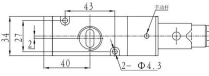
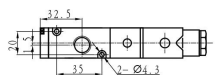
● TG2331-10

● TG2341-15



● TG2331-10

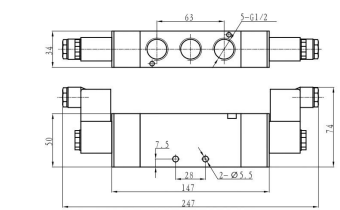
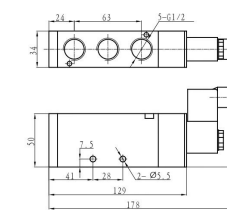
● TG2341-15



2 Positions/5 Ports Solenoid Valve

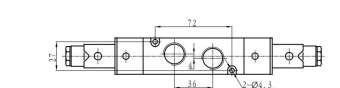
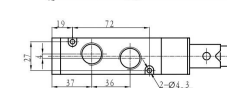
● TG2541-15

● TG2542-15



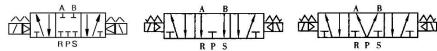
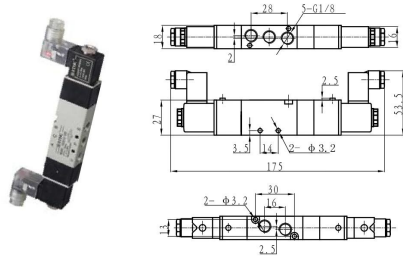
● TG2541-15

● TG2542-15



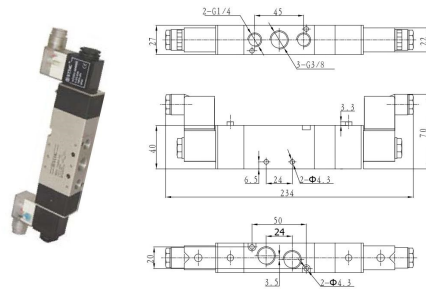
TG Series Solenoid Valve

3 Positions/5 Ports Solenoid Valve

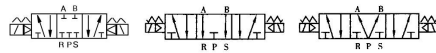
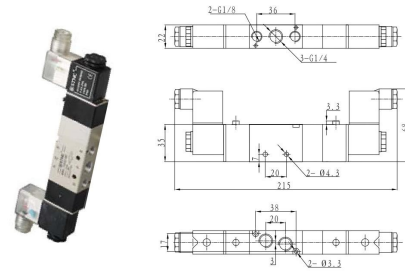


- TG3512-06C
- TG3512-06E
- TG3512-06P

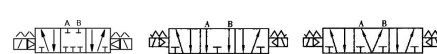
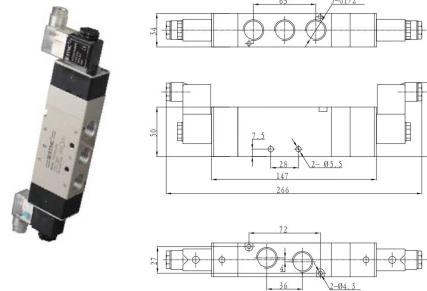
3 Positions/5 Ports Solenoid Valve



- TG3532-10C
- TG3532-10E
- TG3532-10P



- TG3522-08C
- TG3522-08E
- TG3522-08P



- TG3542-15C
- TG3542-15E
- TG3542-15P

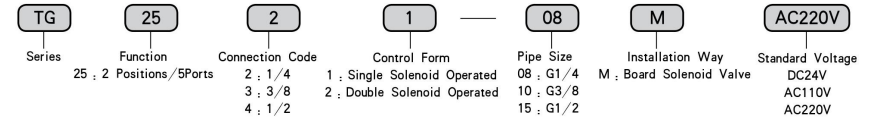
TG Series Board Solenoid Valve

2 Positions/5 Ports Board Solenoid Valve



- TG2521-08M
- TG2522-08M
- TG2531-10M
- TG2532-10M
- TG2541-15M
- TG2542-15M

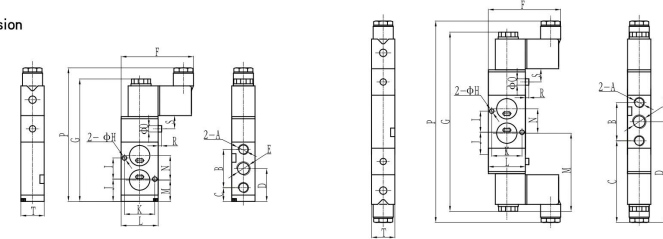
Ordering Code



Technical Parameter

Item Specification	Function	Pipe Size	Nominal Diameter (mm)	Applicable Medium	Applicable Pressure Range	Operating Method	Max Action Frequency	Lubrication	Medium Temperature
TG2521-08M	2 Positions / 5Ports	G1/4	8	Air	0.15 ~ 0.8 MPa	Internally Piloted	5 Cycles/Sec	Needless	-5 ~ 60°C
TG2522-08M		G1/4	8						
TG2531-10M		G3/8	10						
TG2532-10M		G3/8	10						
TG2541-15M		G1/2	15						
TG2542-15M		G1/2	15						

Figure Dimension



Type	A	B	C	D	E	F	G	H	I	J	K	L	M	N	P	Q	R	S	T
TG2521-08M	G1/8	36	13.7	31.7	G1/4	66.5	119	4.3	20	21.7	29	35	20.2	23	130	4	1	11	22
TG2522-08M	G1/8	36	67	85	G1/4	66.5	176	4.3	20	75	29	35	73.5	23	196	4	1	11	22
TG2531-10M	G1/4	45	17	39.5	G3/8	69	138	5.2	24	27.5	32	40	29	24	145	4	1	11	27
TG2532-10M	G1/4	45	72	94.5	G3/8	69	195	5.2	24	83.75	32	40	82.5	24	215	4	1	11	27
TG2541-15M	G1/2	63	22.5	52	G1/2	75	166	5.5	32	38	42	50	35.5	37	178	4	1	11	34
TG2542-15M	G1/2	63	77	112.5	G1/2	75	225	5.5	32	94.5	42	50	92	37	247	4	1	11	34

TG Series Die Cast Solenoid Valve

Die Cast 2 Positions/5 Ports Solenoid Valve

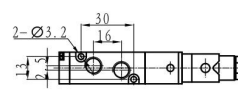
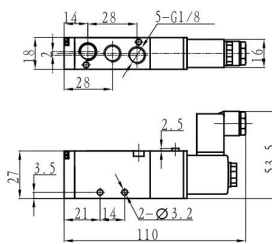


● TG2511F-06

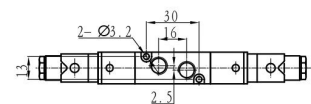
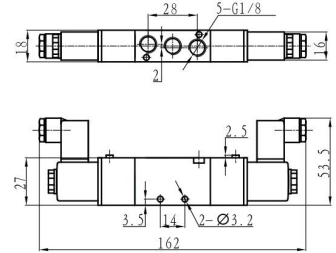


● TG2512F-06

● TG2511F-06



● TG2512F-06



Die Cast 2 Positions/5 Ports Solenoid Valve

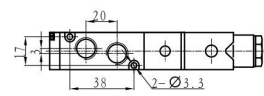
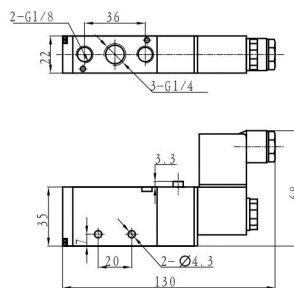


● TG2521F-08

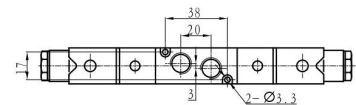
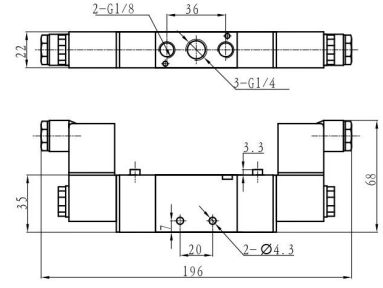


● TG2522F-08

● TG2521F-08



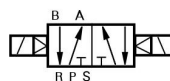
● TG2522F-08



Die Cast 2 Positions/5 Ports Solenoid Valve

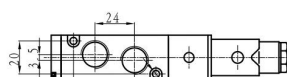
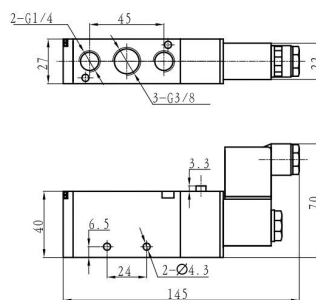


● TG2531F-10



● TG2532F-10

● TG2531F-10



● TG2532F-10

