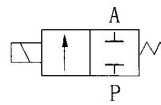


TF Series Solenoid Valve



● TF-06 ● TF-08

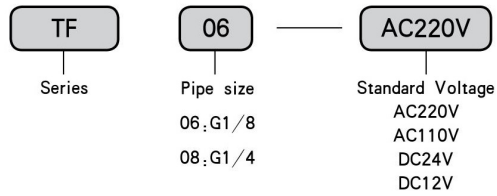
Graphics Sign



Character

活塞直动式，快速反应。
 可多用途使用。
 高效率，长寿命。
 优良的防水性能。
 配线方向灵活。
 外形美观。

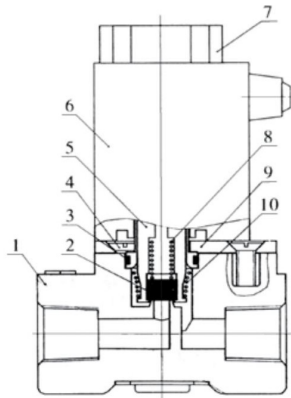
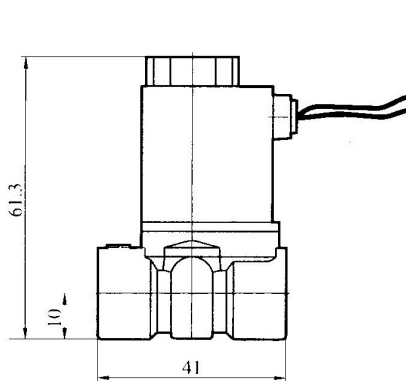
Ordering Code



Technical Parameter

Item \ Specification	TF-06	TF-08
Applicable Medium	Air, Water, Oil, Gas	
Operating Method	Direct Action Type	
Model	Normal closed	
Aperture	2.5	
CV value	0.23	
Pipe Size	G1/8"	G1/8"
Applicable Fluid consistence	Lower than 20CST	
Using pressure Kg/cm ²	0 ~ 7.0	
Highest pressure Kg/cm ²	1.0	
Medium Temperature	-5 ~ 60°C (No Freeze)	
The range of voltage	±10%	
Material of Boey	project models steel	
Material of Seal	VITON	

Figure Dimension



Serial number	Name
1	Body
2	Prevent leak mat
3	O-Ring
4	Cross sunk screw
5	Movable iron
6	Coil combination
7	Coil cap
8	Spring
9	Fixed iron sheet
10	Spring