

CS-301D SERIE

TOGGLE SWITCHES

SPECIFICATIONS:

ELECTRICAL CHARACTERISTICS : 6A with resistive load 120VAC or 3A with resistive load 250VAC.

CONTACT RESISTANCE: maximum of 20 miliohms with 1A DC.

INSULATION RESISTANCE: minimum of 1.000 megaohms.

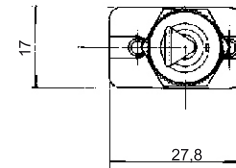
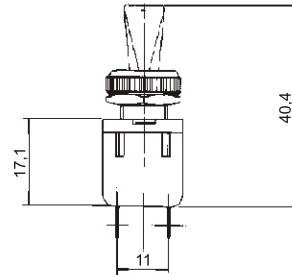
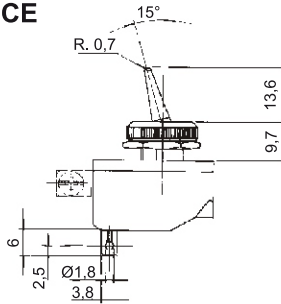
DIELECTRIC WITHSTAND: 1.000V(RMS) for 1 minute (minimum)

OPERATION TEMPERATURE: from 0°C to 55°C



REFERENCE

CS-301 D



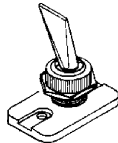
ACTUATORS

M



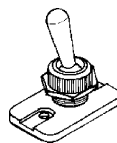
Metallic

A#



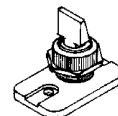
Polyamide

B#



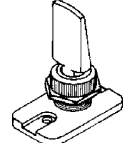
Polyamide

D#



Polyamide

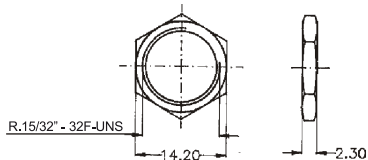
E#



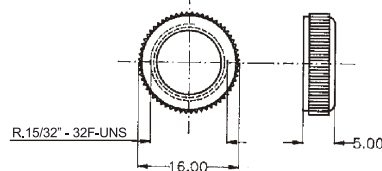
Polyamide

NUT

B1 - Metallic



B2# - Polyamide



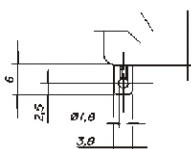
Note:

B3# = B1+B2#

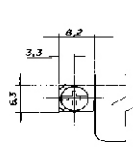
All options have nut melling.

TERMINALS

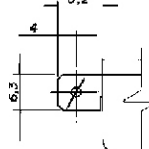
S1 - standard



P1 - screw



E3 - faston 6,3 x 0,8



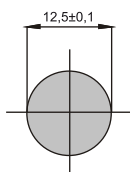
- COLORS

Note: Substitute # by the code of requested color.

A - blue
B - white
C - yellow
D - green

E - red
F - black - (standard)
G - gray
H - brown

CUT FOR FIT



SELECTION GUIDE

CS301D

Reference



actuator

M
A#
B#
D#
E#



nut

B1
B2#
B3#



terminal

S1
P1
E3

Note: Actuator M - metallic with nickel plated - other actuators are made of polyamide.