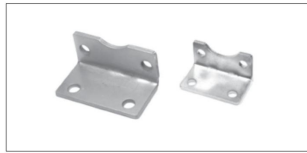
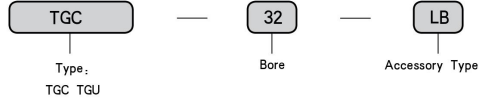
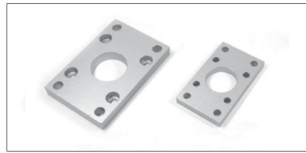


TGC/TGU Installing Accessories

Ordering Code



● LB



● FA, FB



● TC(TGU)



● TC(TGC)



● CA



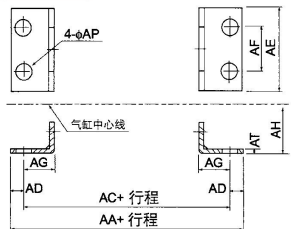
● CB

Accessories Selection

Type/Accessory	LB	FA	FB	CA	CB	TC
TGU	●	●	●	●	●	●
TGUD/TGUJ	●	●	●	×	×	●
TGC	●	●	●	●	●	●
TGCD/TGCJ	●	●	●	×	×	●
TGCT	●	●	●	×	×	×

Figure Dimension

● LB

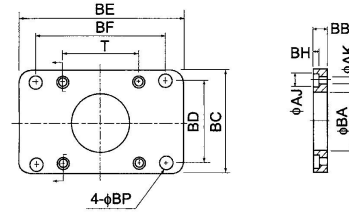


Bore	32	40	50	63	80	100	125	160	200
AA	153	169	173	184	199	209	290	340	380
AC	134	140	149	158	167	173	250	300	320
AD	9.5	14.5	12	13	16	18	20	20	30
AE	50	57	68	80	97	112	140	180	220
AF	33	36	47	56	70	84	90	115	135
AG	20.5	23.5	28	31	30	30	45	60	70
AH	28	30	36.5	41	49	57	90	115	135
AP	9	12	12	12	14	14	16.5	18.5	24
AT	3	3	3	3	4	4	8	8	9

TGC/TGU Installing Accessories

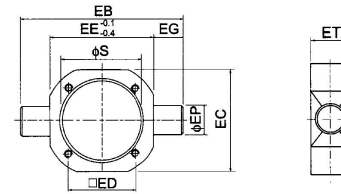
● FA

● FB



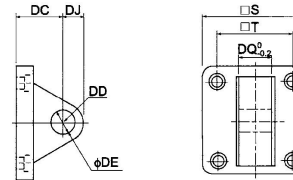
Bore	32	40	50	63	80	100	125	160	200
BA	28.3	32.3	38.3	38.3	47.3	47.3	60.5	65.5	75.5
BB	10	10	10	12	16	16	20	20	25
BC	47	52	65	76	95	115	140	180	220
BD	33	36	47	56	70	84	90	115	135
BE	72	84	104	116	143	162	224	280	320
BF	58	70	86	98	119	138	180	230	270
BH	6.5	6.5	6.5	8.5	10.5	10.5	12.5	12.5	16.5
AJ	10.5	10.5	10.5	13.5	16.5	16.5	19	24.5	25
AK	6.5	6.5	6.5	8.5	10.5	10.5	13	17	17
BP	7	7	9	9	11	11	16.5	18.5	24
T	33	37	47	56	70	84	110	140	175

● TC



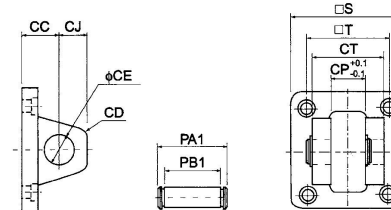
Bore	FB	EC	ED	EE	EG	EP	ET	S
40	113	63	37	63	25	25	30	45.5
50	126	76	47	76	25	25	30	55.5
63	138	88	56	88	25	25	30	68.5
80	164	114	70	114	25	25	35	87.5
100	182	132	84	132	25	25	40	107.5

● CA



Bore	32	40	50	63	80	100	125	160	200
S	48	50	62	75	94	112	140	180	220
T	33	37	47	56	70	84	110	140	175
DC	34	34	34	34	48	48	50	55	60
DD	14	14	15	15	20	20	25	30	30
DE	12	14	14	14	20	20	25	30	30
DJ	14	14	15	15	20	20	33	35.5	36
DQ	16	20	20	20	32	32	69.7	89.7	89.7

● CB



Bore	32	40	50	63	80	100	125	160	200
CC	19	19	19	19	32	32	50	55	60
CD	5	5	3	3	8	8	25	30	30
CE	12	14	14	14	20	20	25	30	30
CJ	13	13	15	15	21	21	31	35.5	36
CP	16.3	20.3	20.3	20.3	32.3	32.3	70	90	90
CT	32	44	52	52	64	64	130	170	170
PA1	41	51.8	60.3	60.3	73.8	73.8	139	181	181
PB1	33.5	45.5	54	54	65.5	65.5	130.5	170.5	170.5
S	48	50	62	75	94	112	140	180	220
T	33	37	47	56	70	84	110	140	175