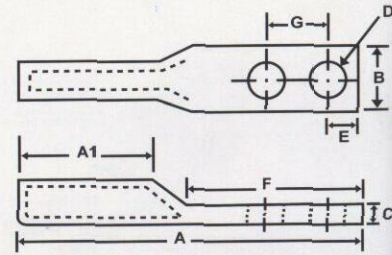


## COPPER 2 HOLE LONG BARREL COMPRESSION LUGS



PART NO.	WIRE RANGE	STUD SIZE	HOLE SPACING	COLOUR CODE	DIMENSION IN INCHES							
					A	A1	B	C	D	E	F	G
98083	8	10	5/8	RED	2.19	0.81	0.42	0.08	0.21	0.28	1.26	0.63
98084	8	1/4	5/8	RED	2.19	0.81	0.42	0.08	0.25	0.28	1.26	0.63
98085	6	1/4	5/8	BLUE	2.36	0.98	0.42	0.08	0.25	0.28	1.26	0.63
96085A	6	1/4	1/2	BLUE	2.24	0.98	0.42	0.08	0.25	0.28	1.14	0.50
98085B	6	1/2	1 3/4	BLUE	4.09	0.98	0.87	0.12	0.51	0.62	2.99	1.75
98085C	6	1/4	3/4	BLUE	2.48	0.98	0.42	0.08	0.25	0.28	1.38	0.75
98085D	6	3/8	1	BLUE	2.91	0.98	0.42	0.08	0.41	0.38	1.81	1.00
98086	4	1/4	5/8	GRAY	2.36	0.98	0.49	0.09	0.25	0.28	1.26	0.63
98086A	4	3/8	1	GRAY	2.95	0.98	0.42	0.09	0.41	0.38	1.81	1.00
98086B	4	1/4	3/4	GRAY	2.52	0.98	0.49	0.09	0.25	0.28	1.38	0.75
98087	4	1/2	1 3/4	GRAY	4.09	0.98	0.87	0.12	0.51	0.62	2.99	1.75
98088	2	5/16	3/4	BROWN	2.87	1.10	0.60	0.10	0.33	0.32	1.61	0.75
98088A	2	3/8	1	BROWN	3.07	1.10	0.60	0.10	0.41	0.38	1.81	1.00
98088B	2	1/4	5/8	BROWN	2.52	1.10	0.60	0.10	0.25	0.28	1.26	0.63
98088C	2	1/4	3/4	BROWN	2.64	1.10	0.60	0.10	0.25	0.28	1.38	0.75
98089	2	5/16	7/8	BROWN	2.87	1.10	0.60	0.10	0.33	0.32	1.61	0.87
98090	2	1/2	1 3/4	BROWN	4.25	1.10	0.81	0.10	0.51	0.62	2.99	1.75
98091	1	1/4	5/8	GREEN	2.56	1.10	0.67	0.11	0.25	0.28	1.26	0.63
98091A	1	3/8	1	GREEN	3.07	1.10	0.67	0.11	0.4	0.38	1.81	1.00
98091B	1	1/4	3/4	GREEN	2.68	1.10	0.67	0.11	0.25	0.28	1.38	0.75
98092	1	3/8	7/8	GREEN	2.93	1.10	0.67	0.11	0.33	0.32	1.61	0.87
98093	1	1/2	1 3/4	GREEN	4.29	1.10	0.75	0.10	0.51	0.62	2.99	1.75
98094	1/0	5/16	7/8	PINK	3.01	1.20	0.74	0.13	0.33	0.32	1.61	0.87
98095	1/0	3/8	1	PINK	3.21	1.20	0.74	0.13	0.41	0.38	1.81	1.00
98096	1/0	1/2	1 3/4	PINK	4.63	1.20	0.74	0.12	0.51	0.62	2.99	1.75
98097	2/0	3/8	1	BLACK	3.43	1.38	0.81	0.12	0.41	0.38	1.81	1.00
98097A	2/0	1/4	3/4	BLACK	2.99	1.38	0.81	0.12	0.25	0.28	1.38	0.75
98098	2/0	1/2	1 3/4	BLACK	4.61	1.38	0.81	0.12	0.51	0.62	2.99	1.75
98099	3/0	5/16	1	ORANGE	3.50	1.38	0.90	0.13	0.33	0.32	1.81	1.00
98099A	3/0	3/8	1	ORANGE	3.50	1.38	0.90	0.13	0.41	0.38	1.81	1.00
98100	3/0	3/8	1 3/4	ORANGE	4.65	1.38	0.90	0.13	0.41	0.38	2.99	1.75
98100A	3/0	1/2	1 3/4	ORANGE	4.65	1.38	0.90	0.13	0.51	0.62	2.99	1.75
98101	4/0	3/8	1	PURPLE	3.54	1.42	1.00	0.13	0.41	0.38	1.81	1.00
98102	4/0	1/2	1 3/4	PURPLE	4.72	1.42	1.00	0.13	0.51	0.62	2.99	1.75
98103	250	3/8	1	YELLOW	3.78	1.61	1.09	0.15	0.41	0.38	1.81	1.00
98104	250	1/2	1 3/4	YELLOW	4.96	1.61	1.09	0.15	0.51	0.62	2.99	1.75
98105	300	1/2	1 3/4	WHITE	5.31	1.97	1.19	0.15	0.51	0.62	2.99	1.75
98106	350	1/2	1	RED	5.39	1.97	1.28	0.17	0.51	0.62	2.99	1.75
98106A	350	3/8	1	RED	4.21	1.97	1.28	0.17	0.51	0.38	1.81	1.00
98107	400	1/2	1 3/4	BLUE	5.47	1.97	1.39	0.18	0.51	0.62	2.99	1.75
98108	500	1/2	1 3/4	BROWN	5.75	2.24	1.54	0.22	0.51	0.62	2.99	1.75
98108A	500	3/8	1	BROWN	4.57	2.24	1.54	0.22	0.41	0.38	1.81	1.00
98109	600	1/2	1 3/4	GREEN	5.79	2.24	1.72	0.25	0.51	0.62	2.99	1.75
98109A	600	3/8	1	GREEN	4.61	2.24	1.72	0.25	0.41	0.38	1.81	1.00
98110	750	1/2	1 3/4	BLACK	6.30	2.64	1.90	0.27	0.51	0.62	2.99	1.75
98110A	750	3/8	1	BLACK	5.12	2.64	1.90	0.27	0.41	0.38	1.81	1.00

- \* MADE OF HIGH CONDUCTIVITY COPPER TUBING
- \* TINNED FOR CORROSION RESISTANCE
- \* COLOUR CODED
- \* UL 486A LISTED
- \* LISTED FOR 35 KVA WHEN PROPERLY INSTALLED